

Kobe-Osaka International Port Corporation established

Today, October 1, 2014, Kobe-Osaka International Port Corporation was established integrating Kobe Port Terminal Corporation and Osaka Port Corporation. We will take measures to strengthen the international competitiveness of Hanshin Port by promoting effective port management.

◆Outline

Company Name : Kobe-Osaka International Port Corporation
Location : Head Office
Kobe International House 20F
8-1-6 Goko-dori, Chuo-ku, Kobe 651-0087 Japan
Date Established : Wednesday, October 1, 2014
Directors : Yasuo Inubushi, Representative Director / Chairman
Yoshifumi Kawabata, Representative Director / President and CEO
Mitsuo Nakamura, Director / Executive Vice President
Ryohei Teramoto, Director / Executive Vice President
Makoto Yoshii, Outside Director
Takayuki Tokuhira, Outside Director
Auditors : Katsuhiko Kuroda, Outside Auditor
Hajime Moriwaki, Outside Auditor
Accountant Auditor : EY Japan
Capital : 450 million yen
Capital Preparation : 450 million yen
Number of stocks issued : 18,000 (City of Kobe 9,000 City of Osaka 9,000
Value: 50,000 yen/stock)

Logo :

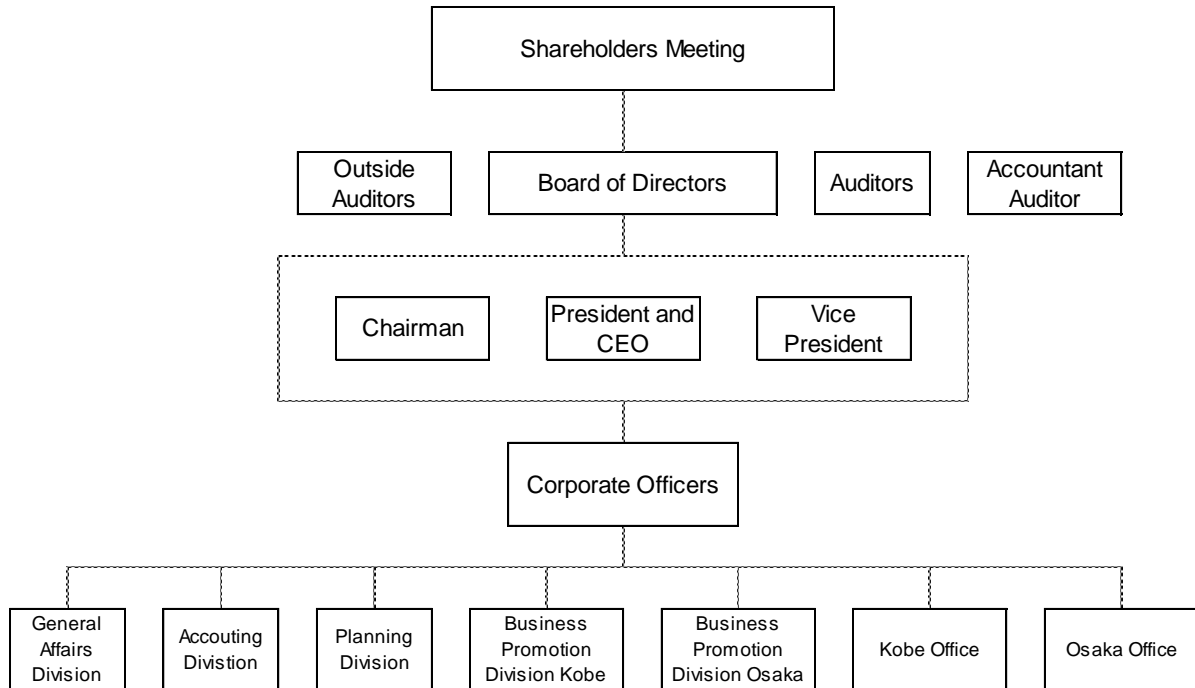


Japanese version



English version

Organization :



Inquiries to Hoshijima or Okamoto, General Affairs Division TEL078-855-2215